



Wick Lane, London, E3

BUTLER & STAG



Guide Price - £500,000 to £550,000
Positioned on the vibrant edge of Fish Island, this large two-bedroom, two-bathroom apartment offers generous living space, modern finishes and a private balcony overlooking the canal and the Olympic Stadium. Located on Wick Lane, it combines waterside tranquility with fast access to Hackney Wick's creative scene, Stratford's shopping and transport, and the open green spaces of Victoria Park and the Queen Elizabeth Olympic Park.



Leasehold

- Two Double Bedrooms
- Two Bathrooms
- Two Balconies
- Over 1300 Sq. Ft
- Concierge Service
- Lift Access
- EWS1 Compliant
- Chain Free

This apartment has been designed with space and light in mind. The open-plan reception spans the heart of the home, with plenty of room for both relaxing and entertaining. Glazed doors open out to the private balcony, where you can enjoy morning coffee or evening drinks against a backdrop of the canal and the Olympic Stadium.

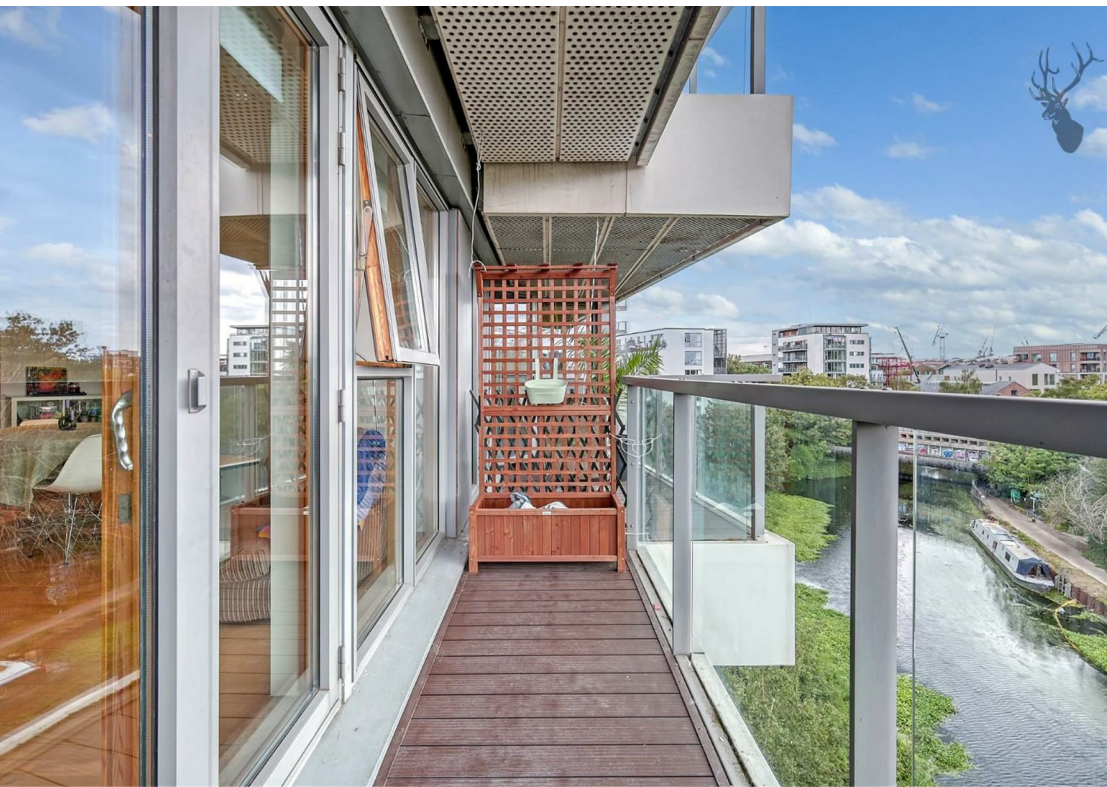
The kitchen features sleek cabinetry, quality worktops and integrated appliances, blending seamlessly into the living area while still offering excellent practicality.

Both bedrooms are comfortable doubles, with the principal bedroom benefiting from its own en-suite shower room. The second bathroom, finished in a contemporary style, serves the second bedroom and guests alike.

On Wick Lane, just off Fish Island, you're in one of East London's most exciting and evolving neighbourhoods. Hackney Wick is a short stroll away, with its mix of independent cafés, breweries, creative studios and riverside bars. Victoria Park and the Olympic Park provide acres of green space on your doorstep, while nearby Stratford Westfield offers world-class shopping and leisure.

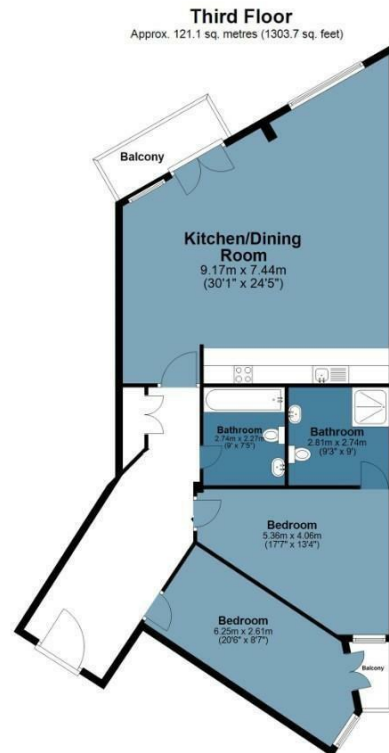
Hackney Wick Overground for Shoreditch, Dalston and Highbury & Islington Stratford International & Stratford Underground (Central, Jubilee, DLR, Elizabeth Line) for Canary Wharf, the City and West London
 Excellent cycle routes and canal towpaths linking to Victoria Park, Islington, and beyond





Wick Lane, Ink Court

Approx. Gross Internal Area 121.1 Sq M (1303.7 Sq Ft)



Measurements are approximate and for illustration purposes only. While we do not doubt the accuracy and completeness, we advise you conduct a careful independent assessment of the property to determine monetary value.
© @modephoto.uk www.modephoto.co.uk

BUTLER & STAG



BUTLER & STAG

☎ 020 8102 1236

🏠 508 Roman Road, Bow, London, E3 5LU

✉ bow@butlerandstag.com

www.butlerandstag.uk

IMPORTANT NOTICE - These particulars have been prepared in good faith and they are not intended to constitute part of an offer or contract. We have not performed a structural survey on this property and the services, appliances and specific fittings have not been tested. All photographs, measurements, floor plans and distances referred to are given as a guide and should not be relied upon.